

7 Node IO Smart Switch



User Manual

Technical Specs (For Nerds)

AC Specifications	
Operating Input Power Range	150 VAC~270 VAC+~5%, 47~63 Hz
Maximum Load per Node	For Output 7 Resistive Loads: 16 A LED LIGHT: 500W or 5 N LED STRIP/PROFILE: 500W Fixed Inductive Loads: 1000VA For Output 1-6 Resistive Loads: 500 W/ CH LED LIGHT : 100W Or 5 N/CH (Whichever Is Higher) LED STRIP/PROFILE : 100W (Max 1 Number per O/P) Fixed Inductive Loads: 300VA
General Specifications	
Power Consumption when loads off	< 0.2 W
Power Consumption when loads on	<1.0 W
Temperature	Operation 0 C to +50 C. Storage -20 C to +70 C.
Relative Humidity	Operating 5%RH to 95%RH Non-Condensing. Storage 5%RH to 95%RHNon-Condensing
Dimensions	114 mm x 54.5 mm x 23 mm
RF Frequency	81 × 36 × 66mm

Let's Set it up

1. Check Your Wi-Fi Signal

Before you begin, make sure your switchboard has a strong Wi-Fi signal. The signal strength should be better than **-50 dBm**. If it's weaker, no worries – just move your router closer to the switchboard for a smoother connection.

2. Turn Off the Power

Safety first! Turn off the power supply to the switchboard before you begin any work.

3. Open Up the Switchboard

Gently remove the top cover of your switchboard.

4. Disconnect Load Wires

Carefully remove all the existing load wires connected to the switches.

5. Label the Wires

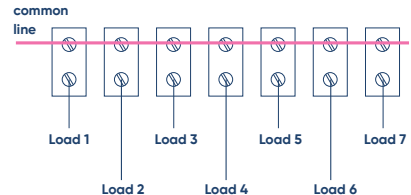
Label each wire based on its original switch position – this helps during reconnection.

Wiring

6. Identify the Neutral

Locate the neutral wire in the switchboard and keep it separate

(Pro tip: You'll need this for the Smart Switch to function properly.)



Let's Set it up

5. Connect the Smart Wires

Now it's time to bring your 7 Node Smart Switch to life. Take the 7 color-coded wires from the device and connect them to the exact switch points where you removed the load wires. Follow the same sequence you labeled earlier – this keeps everything in order.

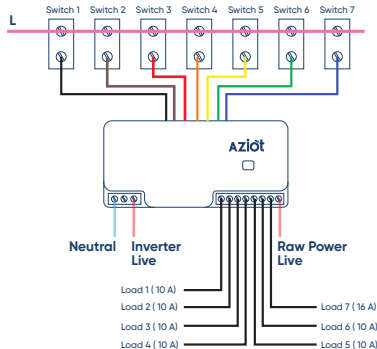
Here's your color guide:

1 – Black, 2 – Brown, 3 – Red, 4 – Orange, 5 – Yellow, 6 – Green, 7 – Blue.

Make sure each wire is securely fixed to its corresponding switch – clean, tight connections make all the difference.

Fit the product properly inside the switch board. Verify all the connections including the Neutral and Line Connections, Load Sequence and inputs connections.

Wiring



Let's Set it up

1. Download the App – Grab the Smart Life app from the App Store or Google Play. It works on both iOS and Android.



2. Wi-Fi Ready? – Make sure your phone is connected to a 2.4 GHz Wi-Fi network. (5 GHz won't play nice here.)

3. Turn on Location & Bluetooth – Enable both on your phone. The app needs them to discover your device.

4. Power Up & Pair Mode – After installation, press and hold the center button on the Smart MCB for 5 seconds until the blue LED blinks rapidly.
That's your signal—it's ready to pair!

Let's Set it up

5. Open the Smart Life App – Launch the app and head to the home screen.

6. Start Scanning – Tap the "+" icon in the top right corner and choose Auto Scan. Your device will pop up automatically.

7. Add the Device – Tap the "+" next to the Bluetooth device and select 'Go to add' on the prompt.

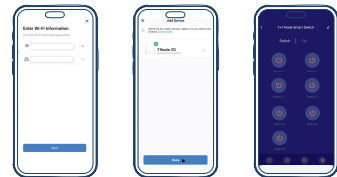


Let's Set it up

8. Wi-Fi Connection – Follow the in-app steps to connect your Smart MCB to your Wi-Fi network.

9. Confirm & Done – Once connected, the app will confirm the setup. Tap 'Done' to finish.

10. You're In! – The Smart MCB will now appear in your device list. Time to take control—right from the Smart Life app.



Customer Support

Customer Care : +91 88866 35918

support@aziot.life



Website: www.aziot.life

Follow us on: Aziot.life